



www.arnscott.com

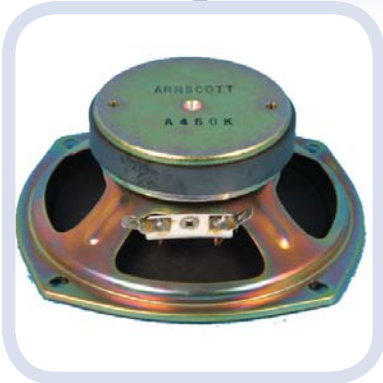


# A460K

4-1/2" pin cushion type Loudspeaker,  
11 Watt, 6 Oz.

## FEATURES

- 4-1/2" Pin Cushion Type, Dual Cone Loudspeaker
- Built-in Transformer Mounting Facilities On Back Of Speaker
- Paper Rolled Edge, Very Efficient Design
- Smooth Extended Frequency Response



<b>POWER:</b>	11 Watts R.M.S.
<b>FREQUENCY RESPONSE:</b>	140 - 10,000 Hz. +/- 5dB
<b>INPUT:</b>	8 Ohm, optional line matching transformers available
<b>TRANSFORMER TAPS:</b>	Optional, see chart below
<b>SENSITIVITY:</b>	95dB (1W1M) Average over given frequency response
<b>DIMENSIONS:</b>	4-5/8"(11.7cm) round, 2-1/8"(5.4cm) deep
<b>DISPERSION ANGLES:</b>	-3dB down at 64 degrees, -6dB down at 140 degrees
<b>DISTORTION:</b>	3.5% max over rated frequency response

The A460K is a high quality 4 1/2" paper rolled, paper coned loudspeaker. It's applications are primarily for 4 - 10 watt low power systems, where an economy budget, in conjunction with higher sound quality expectations is required. The 6oz. magnet in conjunction with the 3/4" voice coil make an ideal high SPL and decent frequency response type of speaker. This speaker can be used in hall ways, open ceiling concept office, shopping areas, and basically wherever a maximum 20 foot high ceiling is considered. This speaker can be factory fitted with a variety of transformers (see chart below). These transformers are sold separately.

# A460K

4-1/2" Pin-cushion, Dual Cone Type Loudspeaker  
11 Watt, 6 oz.

A460K

## SPECIFICATIONS

## ARCHITECTS AND ENGINEERS SPECIFICATIONS

The loudspeaker shall be AEG Model A460K. The unit shall be a four and one half inch, permanent magnet, paper rolled and bodied cone type speaker using a 6oz. oriented ferrite magnet, producing a minimum gap flux density of 9,500 Gauss. The voice coil diameter shall be three quarters of one inch, and have an impedance of 8 ohms. The continuous power rating shall be 11 watts, and the uniform frequency range shall be from 140-10,000 Hertz. The minimum axial sensitivity shall be 95dB.(at 1m with 1 watt input). The depth of the loudspeaker shall not exceed 5.4cm (2 1/8"). The AEG A460K shall be used wherever a smooth response, voice and light background music range 4 1/2" loudspeaker is recommended.

SPEAKER / TRANSFORMER COMBINATIONS AVAILABLE						
Model Number	Transformer	Transformer Voltage	Transformer Max. Power	Transformer Power taps (Watts)	Transformer Frequency Response	Insertion Loss
46-255L	A25-5L	25V CT	4W	0.25, 0.5, 1, 2, 4	±1.0dB. 100 - 10kHz.	1.5dB.
46-7025L	A7025-5L	70.7 / 25V	5W	0.32, 0.54, 1.25, 2.5, 5	±1.0dB. 100 - 10kHz.	1.5dB.