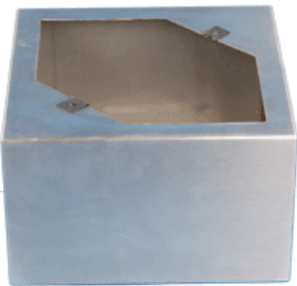




# Clean Room

## CR Series

Speaker products for Clean Room Manufacturing Environments



### FEATURES

- Sealed Diaphragm Cover In Stainless Steel And Polycarbonate To Seal Out Dust And Moisture
- Various Speaker Assemblies Available
- 70v Audio Line Transformer Can Be Built In, or Removed
- 4 and 8" Models Are Available
- Stainless Steel Or Tough Powder Coated Surface Enclosures Available
- Epoxy Coated Stainless Steel Can be Ordered as an Option for Acid Harsh Environments

Devices for use in clean room manufacturing environments.

Clean Devices

### GENERAL SPECIFICATIONS

4" Speaker Assembly	Clean Room Cover	Back Boxes Surface	Back Boxes Flush	Flush Rails
				
46-704-71 46-708-71	G75SS	SE48W	SE48SS	E15 MC1-P

8" Speaker Assembly	Clean Room Cover	Back Boxes Surface	Back Boxes Flush	Flush Rails
				
86-704-25 86-708-25	G76SS	SE20SB	SE20SS (Not Shown) E20	MC1-P

### Speaker Assembly Characteristics

Speaker	Max SPL - 1Meter W/Cover (dB)	Dispersion Angle -3dB -6dB	Speaker (+-5dB) Response	Transformer Response	Transformer Tap Max (Watt)
46-704-71	95	64 / 140	110-12kHz	60-12kHz (+-1.0dB)	4
46-708-71	98	64 / 140	110-12kHz	50-15kHz (+- 1.0 dB)	8
86-704-25	91	40 / 100	100-14kHz	60-12kHz (+-1.0dB)	4
86-708-25	94	40 / 100	100-14kHz	50-15kHz (+-1.0dB)	8

## Clean Room Device

Devices for use in clean room manufacturing environments.

# Clean Devices

### ARCHITECTS AND ENGINEERS SPECIFICATIONS

#### General Note:

The CR Series of loudspeaker devices are designed to be used in clean room environments where dust and other particulate matter cannot escape from the loudspeaker into the clean environment. All other products still use a perforated screen, with the loudspeaker mounted from behind. Although their loudspeakers are usually the non deteriorating type, the huffing and puffing of the loudspeaker cone will attract particulate from installation, retrofitting work and so on. Our assembly completely seals the speaker from the clean environment. The down side of our product is the sound quality and the sound pressure output is not as good as a conventional perforated loudspeaker grille. This product is designed to operate in harsh environments up to and including

#### AEG Clean Room Series

The ARNSCOTT CR Series consist of an 10.2cm (4") or a 20cm (8")loudspeaker, 6 oz. Magnet, open back speaker housing for better SPL levels over our closed back units, complete with a low profile constant voltage line matching transformer, and an all steel speaker baffle finished in an off white powder paint. The frequency response of the units shall be as the chart to the left represents. The 70.7 Volt transformer shall be of the line matching type, with the following power taps represented below which can produce sound pressure output up to 98dB. (speaker / transformer dependent) at 1 Meter (Cover attached). To ready this unit for a recessed clean room application, order the speaker unit as found to the left, and add the G75SS for 5" speakers, or G76SS for 8" speakers, stainless steel baffle cover. Arnscott's CR series are available only in a square baffle format. The G75SS cover fits over the Speaker device, and the two (four for 8" assemblies) mounting screws hold the speaker assembly and the clean room cover to the back box. ARNSCOTT Model CR Series and G75SS / G76SS Clean Room Cover shall be used wherever a recessed or surface mount clean room application exists. The speaker assembly can also be ordered without the line matching transformer, ask for further information if this is required.

## Clean Room Device

Devices for use in clean room manufacturing environments.

### ORDERING AND INSTALLATION INFORMATION

#### Ordering information:

- Surface mounted back boxes are available in white powder coat, or fully seam welded Stainless Steel.
- Order the following parts: Speaker assembly, Cover, surface back box, OR flush back box and also the rail kit. This rail kit is not required for the surface mount back boxes, unless extra support above a ceiling tile is required.
- The CR cover is laid over the speaker assembly's baffle, then the mounting screws are inserted, attaching the 2 units to the back box.
- The 704 Transformer has taps of 0.25, 0.5, 1, 2 and 4 watt. The 708 transformer has taps of 1, 2, 4 and 8 watt.
- Repair kits are available for the diaphragm, although we only sold this part once to a contractor that did not know what they were doing and peeled the covers off of new product..... crazy to think, as the effort put in should have been an indicator that maybe that was not the right thing to do..... so don't order any, you'll most likely never need one.

#### Parts to Order:

Speaker Assembly	CR Cover	Surface Back Box	Flush Back Box	Flush Mount Rails
4" Assemblies				
46-704-71	G75SS	SE48W / SE48SS	E15	MC1-P
46-708-71	G75SS	SE48W / SE48SS	E15-4	MC1-P
8" Assemblies				
86-704-25	G76SS	SE20SB / SE20SS	E20	MC1-P
86-708-25	G76SS	SE20SB / SE20SS	E20	MC1-P

#### Custom Work:

We have produced a back box similar to the E15 for flush mounting, for 2 customers that had clean room ceilings made from 3" aluminum honeycomb. We made the back box 6" deep, added a square flange 1/2 way up, which allowed the round enclosure to be squared from the outside of the ceiling, the top of the room. We then added an electrical box and cover and ran the transformer leads into the junction box, allowing the rooms power taps to be changed from the outside of the room. This is convenient if the taps ever do need to be changed, as it does not interfere with production, and does not require recalking the cover on the inside of the room after it was cut to access the inside of the back box.

If you have other requirements, we are always interested in helping you solve your issues.