



www.arnscott.com

www.arnscott.com

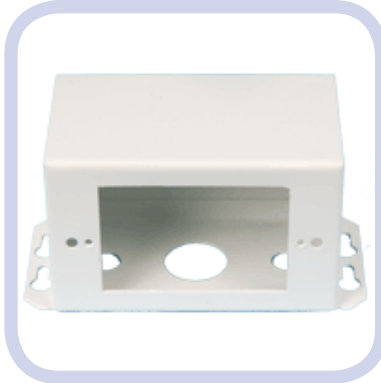
Control, Surface Boxes



SM Series

Surface Mount Box

Surface Mount Boxes for 1 and 2 gang Controls and wall plates.



FEATURES

- * 1 & 2 Gang Models
- * Custom Sizes and finishes available
- * 2 Depths are available
- * Standard 3-9/32" Mounting Centers
- * Under Counter Model is Available
- * Powder Coated White Finish

1

Specifications subject to change without notice

www.arnscott.com

sales@arnscott.com

ARNSCOTT ELECTRONICS INC.

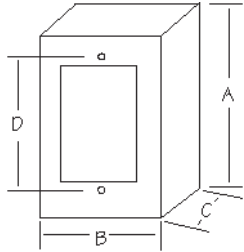
AEG_M-CT-SM-0002-R-B

211 Smith Street, Arthur, Ontario, Canada, N0G 1A0 519-848-1100 Fax 519-848-1101

SM Series

Surface Mounted Back boxes, painted White For Housing 1 or 2 gang Controls or Plates

SPECIFICATIONS - BLOCK SCHEMATIC



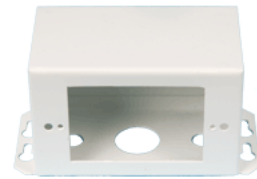
Model No.	A	B	C	D	Number gang	Material	Finish
Screw Mount:							
SM35	4 - 1/2"	2-7/8"	1-1/2"	3-9/32"	1	20 GA CRS	White Powder
SM45	4-1/2"	2-7/8"	2-1/2"	3-9/32"	1	20 GA CRS	White Powder
SM452	4-1/2"	4-5/8"	2-1/2"	3-9/32"	2	20 GA CRS	White Powder
SM45-DM	4-1/2"	2-7/8"	2-1/2"	3-9/32"	1	20 GA CRS	White Powder



SM35 / SM45



SM452



SM45-DM
Desk Mount

SM Series

ARCHITECTS AND ENGINEERS SPECIFICATIONS

MODELS "SM" SERIES

The wall boxes shall be AEG Models, as listed above. The units shall be constructed from 20 Gauge CRS. The mounting centers shall be 8.3cm (3 9/32"). Custom configurations other than the above are available. The finish on these units is white, low gloss powder paint. These surface mount wall boxes are possible up to 10 gang length (custom over 2 gang). Stainless steel plates that will fit these boxes are the Arnscott WP Series (see technical note on Arnscott WP Series). AEG has a new "D" Series wall plate that will fit these boxes, and allow mixing and matching of controls in any configuration. Custom plates, including materials, finishes, and punched holes are obtainable, please submit drawings for evaluation. These surface mount wall boxes shall be used wherever single or multiple gang wall boxes are required. Specify AEG "SM" Series for all your projects.