



www.arnscott.com

Loudspeaker Baffles



G10 Series

G10 Series

Round Acoustic Baffles for 8"
Loudspeakers



G10W



GA10W

FEATURES

- Powder coat finish is hard wearing and durable
- Two Piece back welded perforated mesh construction
- Simple to install or retrofit
- Torsion spring mounts on the GA10W model, no visible screws!



www.arnscott.com

G10 Series

Round Acoustic Baffles for 8" Loudspeakers

G10 Series

SPECIFICATIONS

Back-boxes that work with these baffles:

Standard Screw Mount:

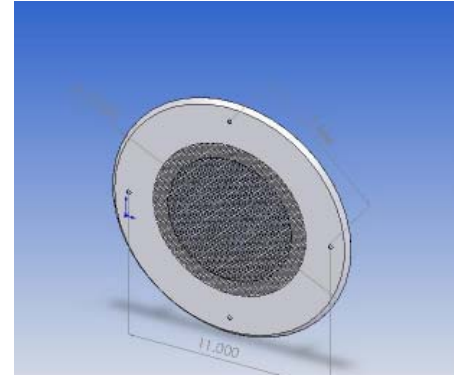
E10, E10-5, E10-6L, E10-10L, E24, SE24

Torsion Mount:

EA10

Note: All models are equipped with welded speaker mounting studs unless otherwise noted.

All baffles can be custom painted to match a particular colour scheme. Send us a colour match and we would be pleased to quote you.



Model No.	Diameter	Mount	Flange Ht.	Spkr Mnt	Material	Finish	ULC Listed
Screw Mount:							
G10W	12-3/4"	11"	3/16"	weld studs	20 GA CRS	White Powder	No
Torsion Mount:							
GA10W	12-3/4"	N/A	3/16"	weld studs	20 GA CRS	White Powder	No

ARCHITECTS AND ENGINEERS SPECIFICATIONS

MODEL G10W

The flush ceiling baffle shall be an ARNSCOTT Model G10W. The baffle shall be fabricated from two pieces of steel, center perforation shall be back welded, finished in semi-gloss white powder paint and shall measure 32.4cm (12-3/4") round and 0.5cm (3/16") deep. The 8-inch loudspeaker shall mount on concealed studs. Four holes shall be provided to mount the baffle to ARNSCOTT Model E10, E10-5, E10-6(L), E10-10(L), E10S or E24, SE24 enclosures.

MODEL GA10W

The flush ceiling baffle shall be an ARNSCOTT Model GA10W. The baffle shall be fabricated from two pieces of steel, center perforation shall be back welded, finished in semi-gloss white powder paint and shall measure 32.4cm (12-3/4") round and 0.5cm (3/16") deep. The 8-inch loudspeaker shall mount on concealed studs. Concealed torsion springs shall be provided to mount the baffle to ARNSCOTT Model EA10, or special ordered EA10-10 recessed enclosures.