



www.arnscott.com

Acoustic Back-Boxes / Grills /  
Vandal-Resistant

G23W

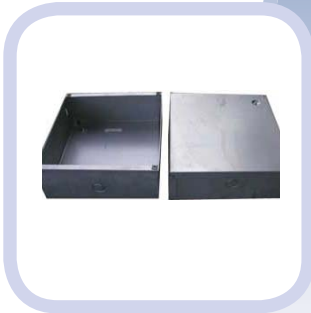


# VP8 Series

Round and Square Acoustic Back-Boxes and baffles for 8" Vandal-Resistant Loudspeakers Applications

## FEATURES

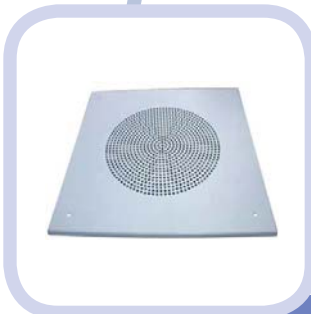
- Vandal Resistant construction for Commercial type installations
- Rust resistant heavy gauge electro-plated steel
- Mounting slots punched into the sides of the flush square mount boxes for easy mounting to the MC1-P Mounting Channels
- Some Models acoustically treated interior helps reduce mechanical resonance
- Custom depths and k/o configurations are available
- SE23 Back-Box is made of heavy gauge steel for surface mounting
- Surface and flush mount units available
- Heavy gauge CRS baffle cover has heavy woven stainless steel mesh material mounted behind the front openings.
- The G11W / G49W baffles are added to the family to give you a standard baffle to use along with our Vandal Resistant baffle, retaining the same back boxes throughout the facility.



E23



SE23



G49W

# VP8 Series

## Round and Square Acoustic Vandal-Resistant Back-Boxes and Grilles for 8" Loudspeakers

VP8 Series

### SPECIFICATIONS

Baffles that work with these back-boxes:  
Standard Screw Mount:

Vandal Resistant:  
G23W, G24W

Non Vandal-Resistant:  
G11W, G49W

Note: k/o's are 2" centered from the back on the sides at 90 degrees from each other. This applies to flush models. All back-boxes can be custom configured, send us a drawing or sketch and we would be pleased to quote you.

Model No.	Depth	Front Meas	Spray Dampened	Cubic Feel	Mounting	Shape	Compatible Baffle
Back-Box:							
E10	4"	11-5/8"	Yes	0.18	MF1, MC1-P	Round	G24W, G11W
E23	3-3/4"	10-5/8" sq	Yes	0.24	MF1, MC1-P	Square	G23W, G49W
SE23	4"	11-1/2" Sq	No	0.30	N/A	Square	G23W, G49W
Baffle - Vandal Resistant							
G23W	5/32"	11-1/2" Sq	N/A	N/A	Screw - TP	Square	
G24W	1/4"	12-3/4" Rd	N/A	N/A	Screw - TP	Round	
Baffle - Non Vandal Resistant							
G11W	3/16"	12-3/4"	N/A	N/A	Screw	Round	
G49W	3/16"	11-1/2"	N/A	N/A	Screw	Square	



E10



E23



SE23



G23W



G24W



G11W



G49W



www.arnscott.com

## VP8 Series

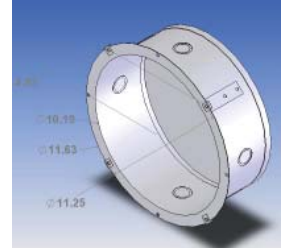
### Round and Square Acoustic Vandal-Resistant Back-Boxes and Grilles for 8" Loudspeakers

VP8 Series

#### ARCHITECTS AND ENGINEERS SPECIFICATIONS

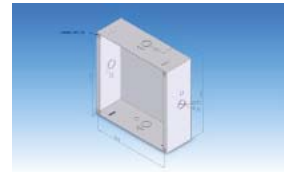
##### MODELS E10

The ceiling BACKBOX shall be AEG Model E10. The back-box shall be constructed of electro-plated steel and shall have the interior coated with resonance damping material. Four mounting straps shall be provided as well as four combination 1/2" - 3/4" knockouts for conduit. The unit shall measure 25cm (10") round at the base, 29.5cm (11 5/8") at the top flange, and have a maximum depth of 10cm (4"). These units shall be used wherever recessed ceiling or wall mount conditions exist. For concrete applications use AEG Model E11 backbox and G11-14W baffle. The E10 is ULC listed and is equipped with a ground screw. These backboxes shall accommodate AEG baffle Models G10W, G11W, G11A, G11SS and Vandal Proof G24W.



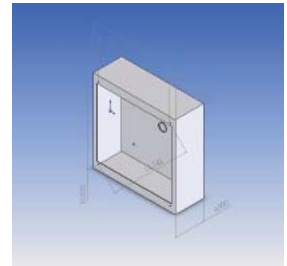
##### MODELS E23 Flush Back Box

The speaker enclosure shall be AEG Model E23 or approved equal. The enclosure shall be manufactured of cold rolled steel. The enclosure shall mount a baffle for an 8" loudspeaker. Back box is 10 5/8"(27cm) square x 3-3/4" (8.6cm) deep. Four combination 1/2" and 3/4" knockouts and four 1/2" OD knockouts shall be provided. The enclosure shall have interior acoustical treatment using flame retardant sprayed in dampening material. The finish shall be Satin Coat galvanizing, applied for maximum adhesion and rust resistance. The enclosure to be used with AEG Model G23W baffle.



##### MODEL SE23 Surface Back Box

The vandal-proof enclosure shall be AEG Model SE23 or approved equal. The enclosure shall be manufactured of 16 gauge cold rolled steel. The enclosure shall mount AEG vandal-proof baffle Model G23W 8" loudspeaker or approved equal. Back box is 11 1/2"(29.2cm) square x 4" (10.2cm) deep. Four mounting holes and one combination 1/2" and 3/4" knockouts shall be provided. The enclosure shall be finished in a Bright White powder coated finish. The baffle mounting nuts are the permanent pressed in type for extra strength. The enclosure to be used with AEG Model G23W baffle.





www.arnscott.com

## VP8 Series

### Round and Square Acoustic Vandal-Resistant Back-Boxes and Grilles for 8" Loudspeakers

VP8 Series

#### ARCHITECTS AND ENGINEERS SPECIFICATIONS

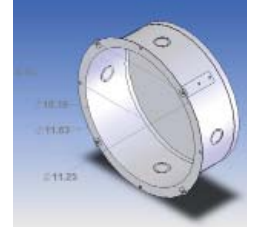
##### Vandal - Resistant baffles

###### MODEL G23W Baffle

The vandal-proof baffle shall be AEI Model G23W or approved equal. The baffle shall be constructed of 14 gauge steel able to withstand an impact of over 55,000 pounds. The baffle is suitable for recessed or surface mounted applications. This baffle is 11-1/2" square, and is 5/16" deep and is equipped with 4 studs to mount a standard 8" speaker. Speaker cone security shall be provided by a layer of stainless steel woven mesh mounted behind the baffle section. The unit shall have a bright white powder coat finish for maximum paint adhesion and resistance to scratch marks. The baffle shall be supplied with vandal-proof hardware made of heat treated alloy.

Hardware shall be removable only with special driver bit (T-8Bit), optionally available.

The baffle shall mount to AEG Model E23(recessed mount) and SE23(surface mount) enclosure.



###### MODEL G24W Baffle

The vandal-proof baffle shall be AEI Model G24W or approved equal. The baffle shall be constructed of 14 gauge steel able to withstand an impact of over 55,000 pounds. The baffle is suitable for recessed mount applications. This baffle is 12-3/4" round, and is 1/4" deep and is equipped with 4 studs to mount a standard 8" speaker. Speaker cone security shall be provided by a layer of stainless steel woven mesh mounted behind the baffle section. The unit shall have a bright white powder coat finish for maximum paint adhesion and resistance to scratch marks. The baffle shall be supplied with vandal-proof hardware made of heat treated alloy.

Hardware shall be removable only with special driver bit (T-8Bit), optionally available.

The baffle shall mount to AEG Model E10 enclosure.

##### Non - Vandal - Resistant baffles

###### MODEL G11W

The flush ceiling baffle shall be an ARNSCOTT Model G11W. The baffle shall be fabricated from one piece of steel, finished in semi-gloss white powder paint finish, and shall measure 32.4cm (12-3/4") round and 0.5cm (3/16") deep. The 8-inch loudspeaker shall mount on concealed studs. Four holes shall be provided to mount the baffle to ARNSCOTT Model E10, E10-5, E10-7L, E10-10L, E10S or E24, SE24 recessed enclosures.



###### MODEL G49W

The flush or surface ceiling baffle shall be an ARNSCOTT Model G49W. The baffle shall be fabricated from one piece of steel, finished in semi-gloss white powder paint. Baffle shall measure 29.2cm (11-1/2") round and 0.5cm (3/16") deep. The 8-inch loudspeaker shall mount on concealed studs. Four holes shall be provided to mount the baffle to ARNSCOTT Model E23 recessed enclosure, or SE23 Surface mounted enclosure.